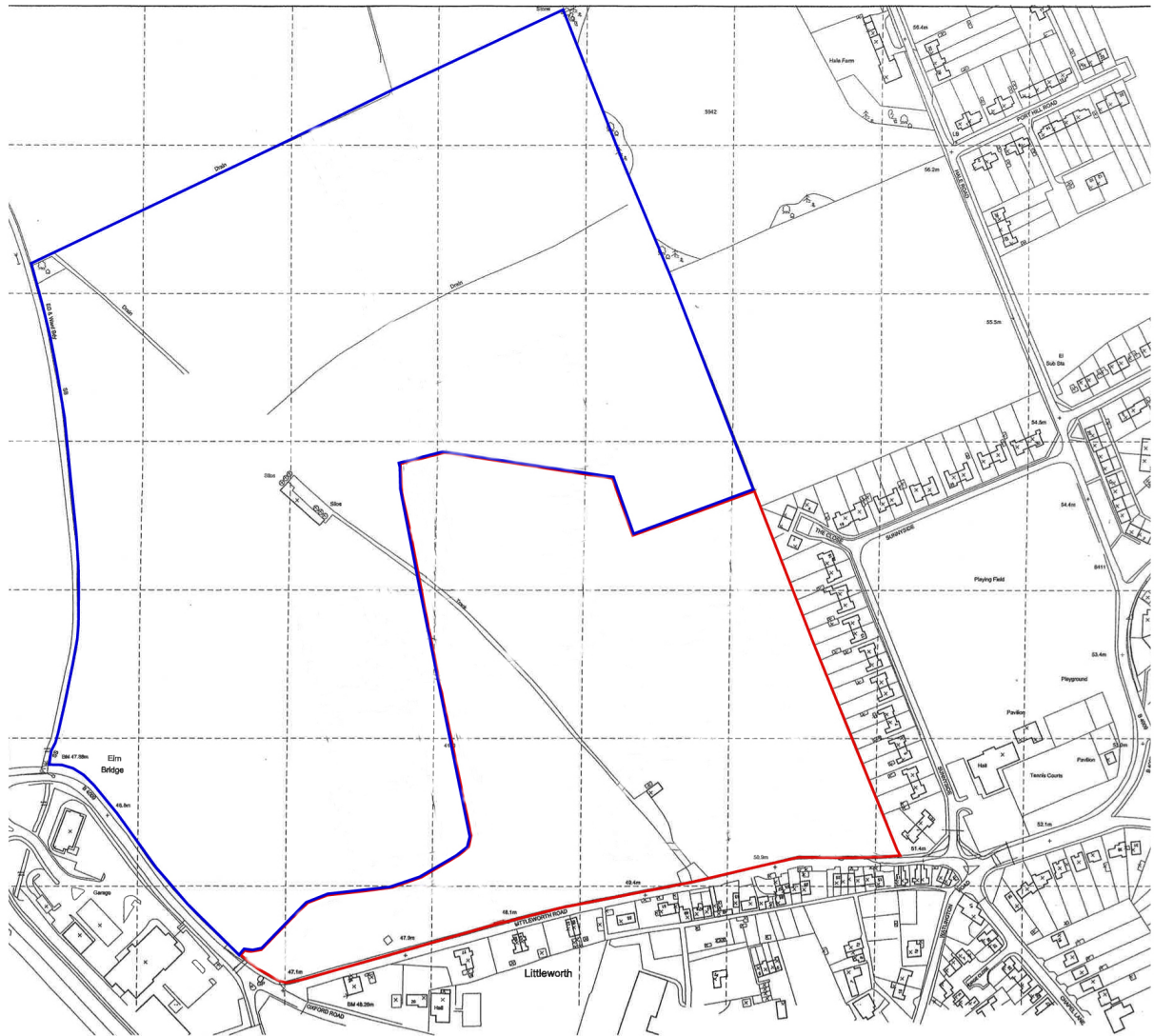
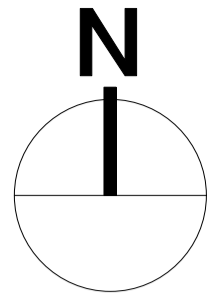


Appendix 1: Location Plan



ARCHITECTS AND TOWN PLANNERS westwaddy ADP The Malthouse 60 East St. Helen Street Abingdon, Oxfordshire, OX14 5EB Tel (01235) 523139 Fax (01235) 521662 e-mail: enquiries@westwaddy-adp.co.uk	Land north of Littleworth Road, Benson		Date	February 2014	
	Site location plan		Scale	1: 1250@A4	
			Drawn	MU chkd MU	
	Job	Dwg No.	Page	261	L01



This drawing is the copyright of West Waddy : ADP and may not be copied or reproduced without written permission. The Copyright Order 1990 provides for the Planning Authority to copy and distribute drawings for public inspection in relation to a Planning Application only if those copies are marked in the following manner:

"This copy has been made with the authority of West Waddy: ADP pursuant to Section 47 of the Copyright Designs and Patents Act 1988 and for the purposes only of public inspection. This copy must not be copied without the prior written permission of the Copyright owner."






Do not scale from drawings unless for planning purposes only. Use figured dimensions at all other times. In case of doubt contact West Waddy:ADP

Dimensions to be checked on site before work commences and any discrepancies reported to the Architect.

The accuracy of this drawing may be reliant upon survey information provided by third parties. No liability will be accepted by WestWaddy:ADP for errors in or arising from such third party survey information.

PLANNING

Amendments Listed

-  Minor material alteration to highways junctions.
-  Minor material amendment B alteration - Road, footpath, pedestrian & cycle link alteration .
-  Minor material amendment to Littleworth Road traffic calming measures.
-  Minor material amendment to alter locations of parking bays.
-  Minor material amendment to include additional play space to accommodate phase 2.

Note:
Please note for detailed proposal to the road changes for Littleworth Road see drawings undertaken by PBA Numbered:

32385_5501_016 Rev A
32385_5501_017
32385_5501_018

Rev	Date	Revisions	Initials	Checked
C	23/3/16	Amendments	IG	HS
B	09/3/16	Amendments	IG	HS
A	26/2/16	Amendments	IG	HS

Littleworth Road Benson

Minor Material Amendments
Original from Appeal
Ref: APP/Q3115/A/14/2222595

The Malthouse
60 East St, Helen Street
Abingdon, Oxfordshire, OX14 5EB
Tel (01235) 523139
Fax (01235) 521662
e-mail: enquiries@westwaddy-adp.co.uk

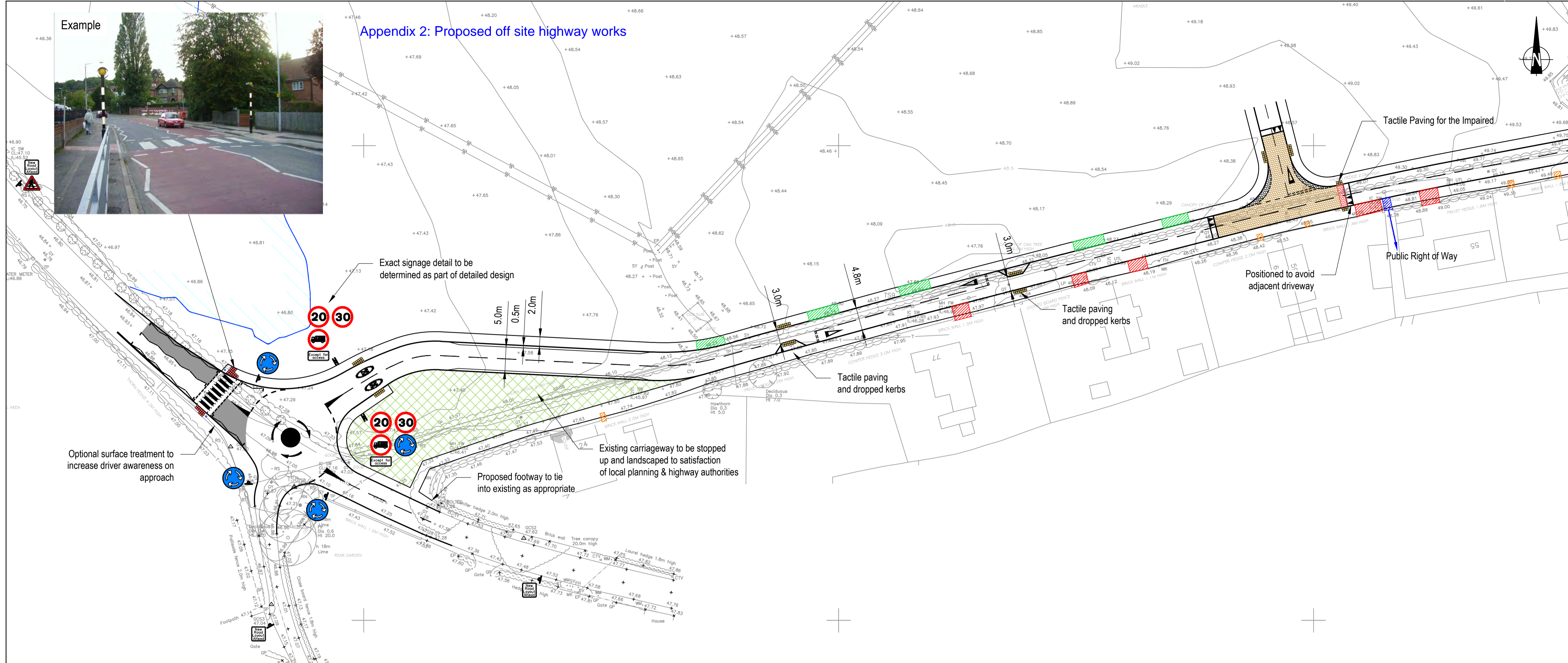
ARCHITECTS AND TOWN PLANNERS
westwaddy ADP

Date **24th November 2015**

Scale **1:1250 @A1**

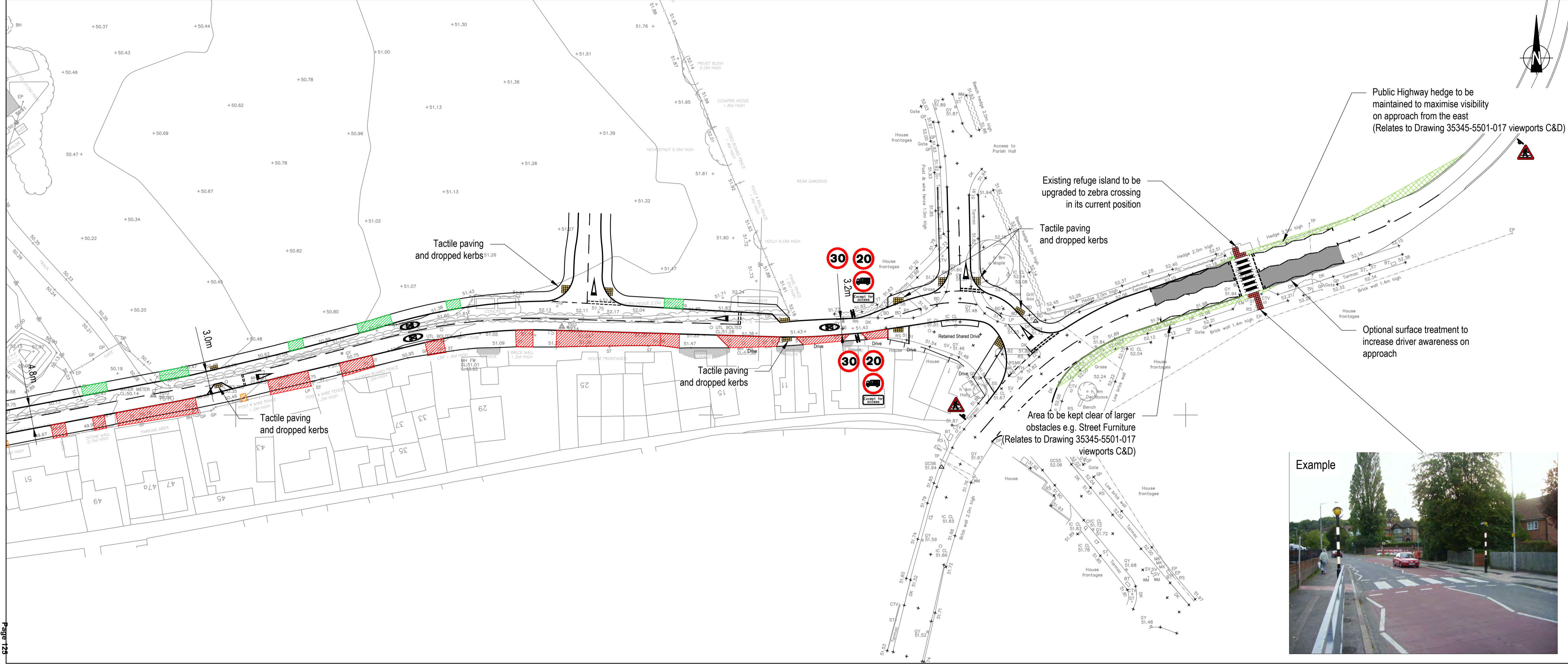
Drawn **IG** Checked **HS**

Job	Dwg No.	Rev.
467	P02	C



Note: All signage provisional and subject to detailed design

- Key
- Existing Driveway
 - Existing Access to Garden
 - Public Footpath Access
 - Potential Proposed Driveway Location
 - Indicative Surface Treatment
 - Indicative Sign Post location
 - 50m Visibility (LTN 2/95 30mph)



A	Updated visibility splays and signage	23.02.16	PR	CH
Mark	Revision	Date	Drawn	Chkd
			Appd	

SCALING NOTE: Do not scale from this drawing. If in doubt, ask.
 UTILITIES NOTE: The position of any existing public or private sewers, utility services, plant or apparatus shown on this drawing is believed to be correct, but no warranty to this is expressed or implied. Other such plant or apparatus may also be present but not shown. The Contractor is therefore advised to undertake his own investigation where the presence of any existing sewers, services, plant or apparatus may affect his operations.

Drawing Issue Status
PRELIMINARY
 Proposed Residential Development, Benson
 Proposed Off-Site Highway Works
 Concept Design for Planning

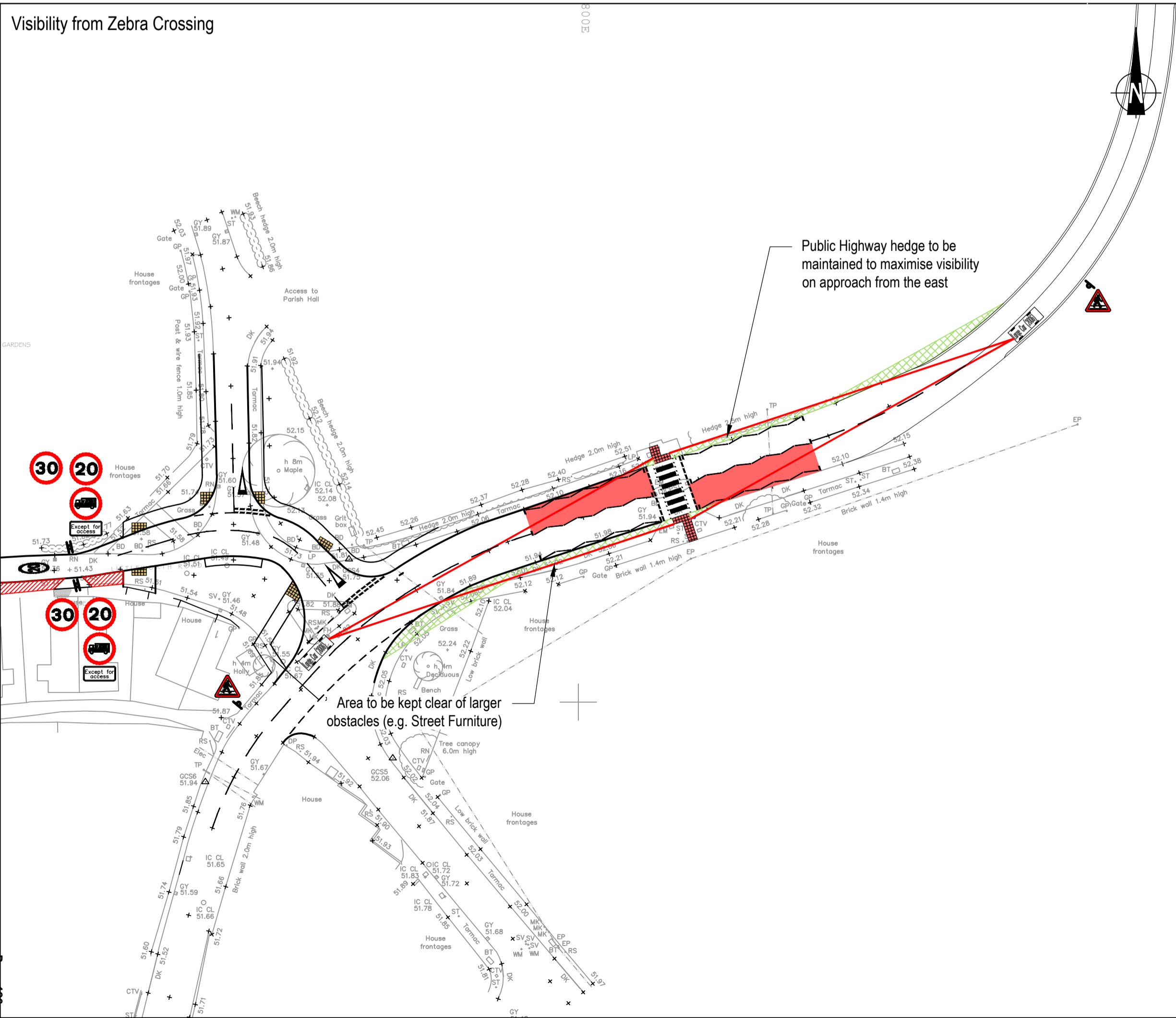
Client			 Offices throughout the UK and Europe www.peterbrett.com © Peter Brett Associates LLP READING Tel: 0118 950 0761
RJ & S Styles Limited			
Date of 1st Issue 09.02.2016	Designed PR	Drawn PR	
A1 Scale 1:500	Checked CH	Approved PB	
Drawing Number 35345-5501-016	Revision A		

Visibility from Priority Junctions Along Littleworth Road

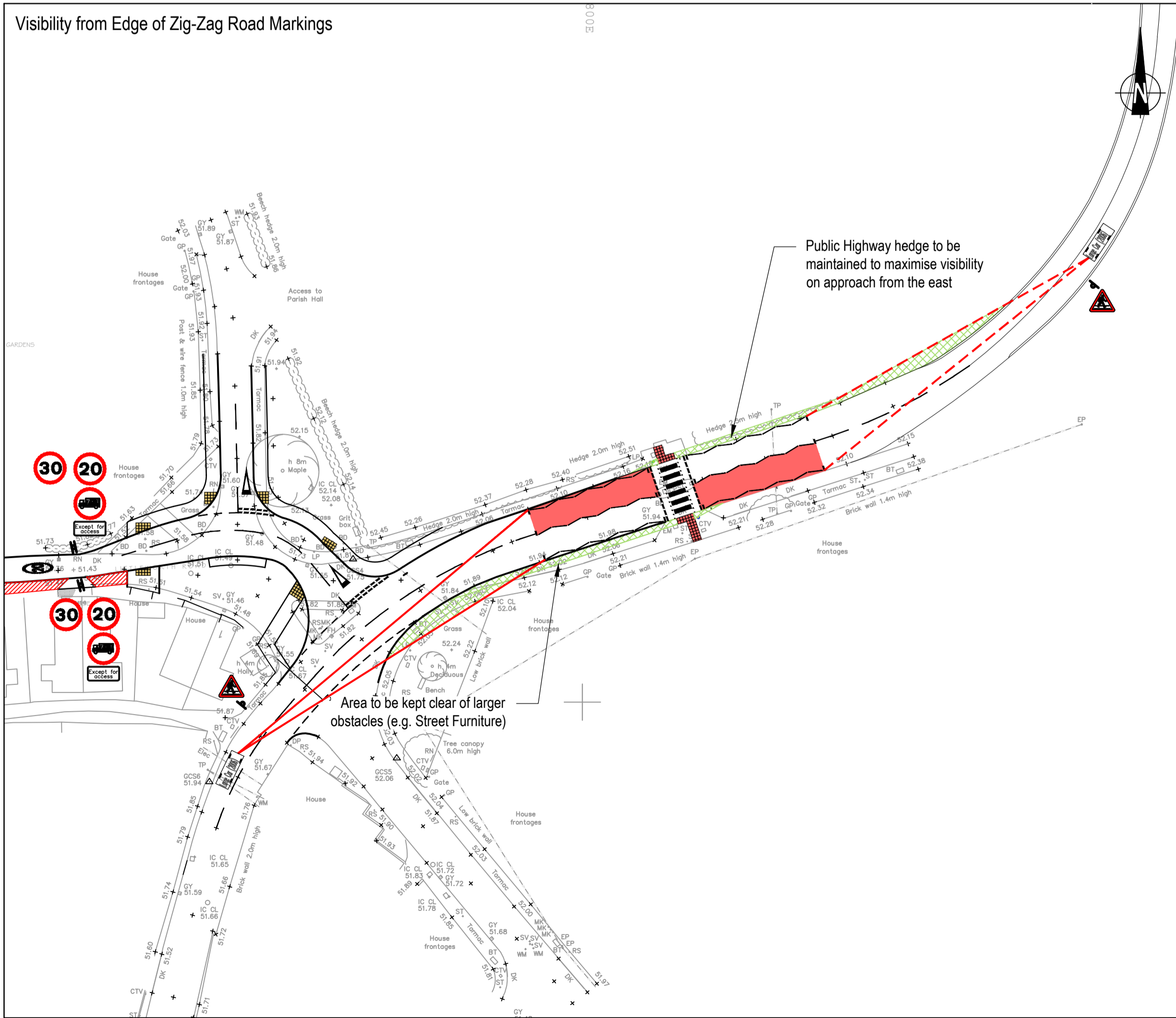
Appendix 2 Proposed off site highway works



Visibility from Zebra Crossing



Visibility from Edge of Zig-Zag Road Markings



Key

- 2.4m x 25m (MfS 20mph)
- - - 2.4m x 25m to the Kerb (MfS 20mph)
- 2.4m x 43m (MfS 30mph)
- - - 2.4m x 43m to the Kerb (MfS 30mph)
- 50m Visibility (LTN 2/95 30mph)
- - - Achievable Visibility 45m

Mark	Revision	Date	Drawn	Chkd	Appd

SCALING NOTE: Do not scale from this drawing. If in doubt, ask.
 UTILITIES NOTE: The position of any existing public or private sewers, utility services, plant or apparatus shown on this drawing is believed to be correct, but no warranty to this is expressed or implied. Other such plant or apparatus may also be present but not shown. The Contractor is therefore advised to undertake his own investigation where the presence of any existing sewers, services, plant or apparatus may affect his operations.

Drawing Issue Status
PRELIMINARY

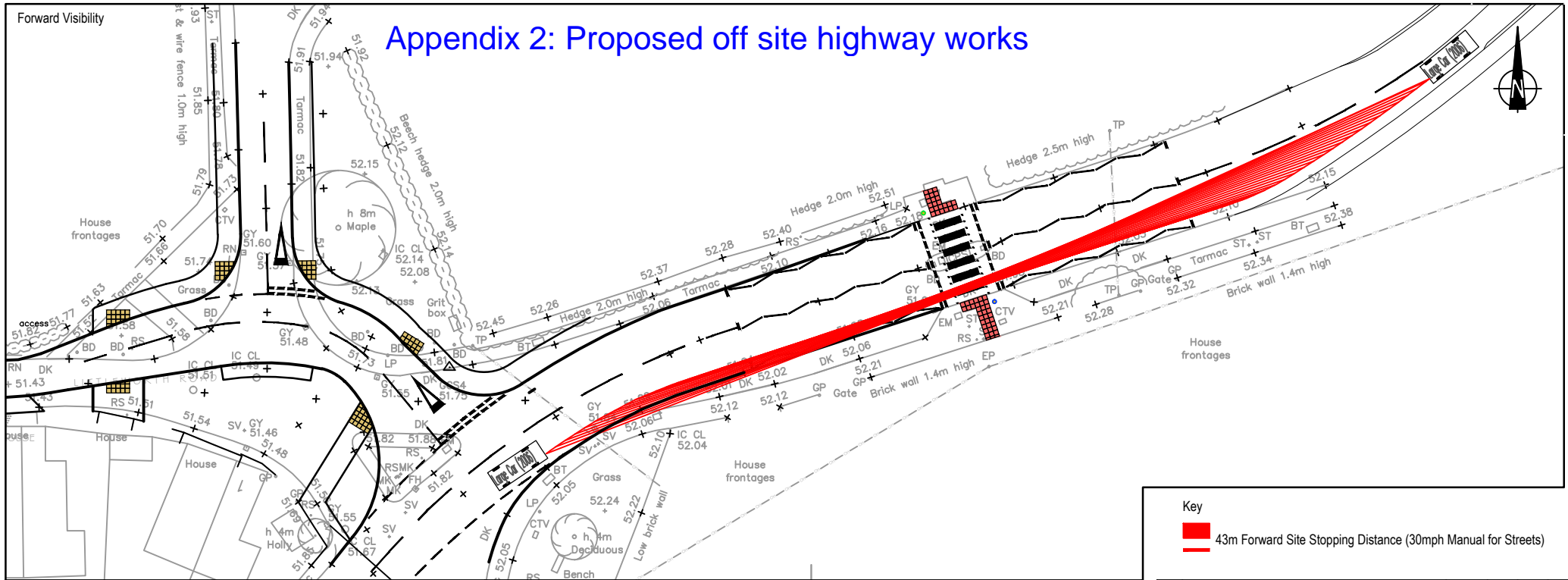
Proposed Residential Development, Benson
 Proposed Off-Site Highway Works
 Concept Design for Planning
 Visibility Spays

Client		
RJ & S Styles Limited		
Date of 1st Issue	Designed	Drawn
23.02.2016	PR	PR
A1 Scale	Checked	Approved
1:500	CH	-
Drawing Number	Revision	
35345-5501-017	-	



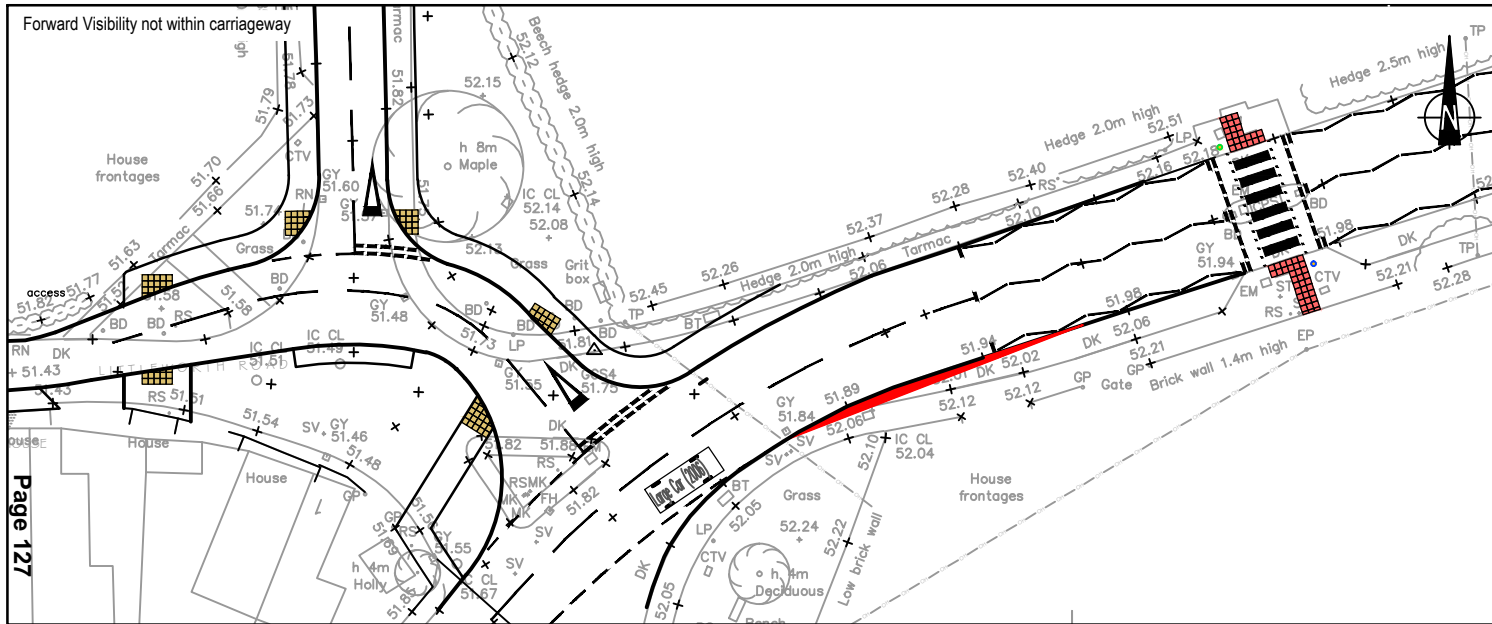
Forward Visibility

Appendix 2: Proposed off site highway works



Key
 43m Forward Site Stopping Distance (30mph Manual for Streets)

Forward Visibility not within carriageway



Mark	Revision	Date	Drawn	Chkd	Appd

SCALING NOTE: Do not scale from this drawing. If in doubt, ask.
 UTILITIES NOTE: The position of any existing public or private sewers, utility services, plant or apparatus shown on this drawing is believed to be correct, but no warranty to this is expressed or implied. Other such plant or apparatus may also be present but not shown. The Contractor is therefore advised to undertake his own investigation where the presence of any existing sewers, services, plant or apparatus may affect his operations.

Drawing Issue Status
PRELIMINARY

Proposed Residential Development, Benson
 Proposed Off-Site Highway Works
 Concept Design for Planning
 Forward Visibility Splay

Client
RJ & S Styles Limited



Date of 1st Issue	Designed	Drawn
23.02.2016	PR	PR
A4 Scale	Checked	Approved
1:500	CH	-

Drawing Number
35345-5501-018

© Peter Brett Associates LLP
 READING
 Tel: 0118 950 0761

This page is intentionally left blank